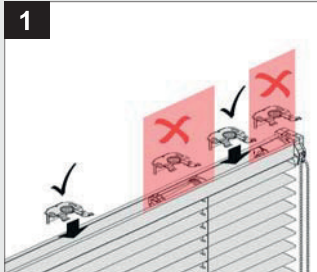


Montage **i**

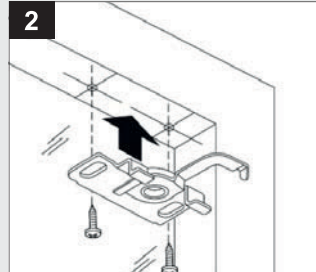
Aluminium-Jalousie 16 und 25 mm

Glasfalzmontage ohne Abdeckblende

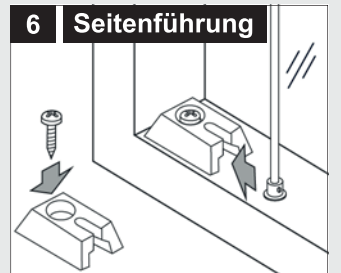
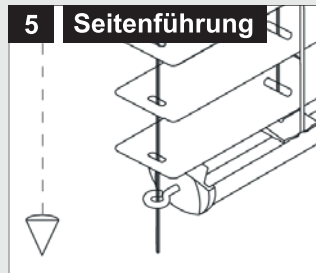
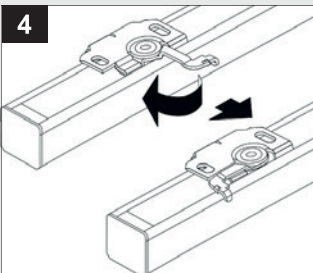
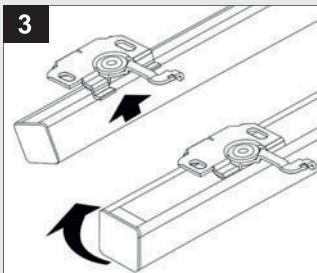
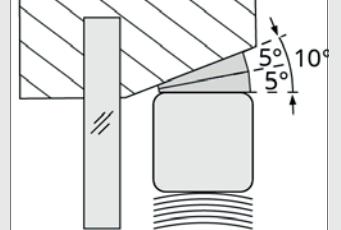


1a Trägeranzahl

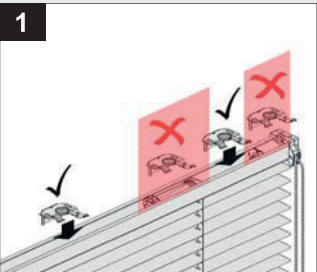
- 2 Träger bis 70 cm Breite
- 3 Träger ab 70 cm Breite
- 4 Träger ab 140 cm Breite



2a Keile, optional

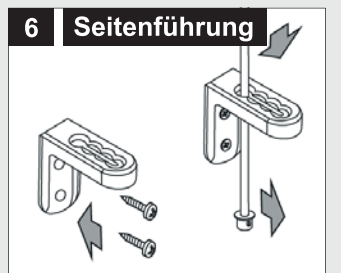
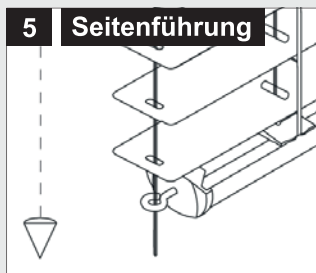
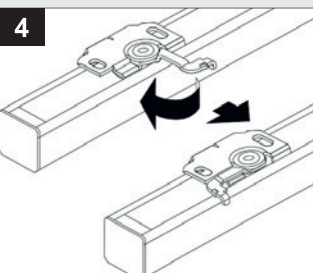
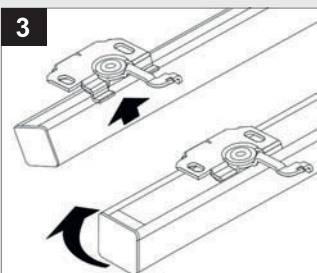
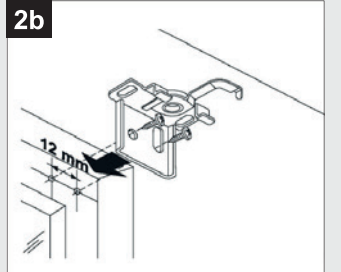
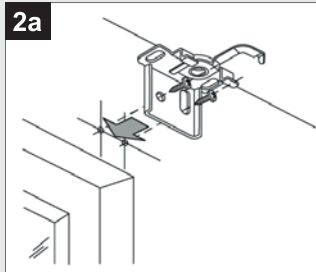


Wand/Fensterflügel



1a Trägeranzahl

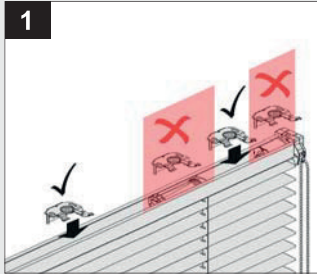
- 2 Träger bis 70 cm Breite
- 3 Träger ab 70 cm Breite
- 4 Träger ab 140 cm Breite



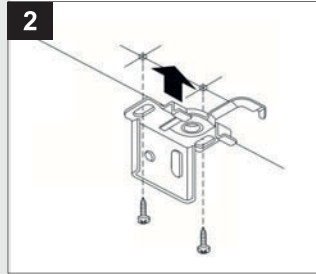
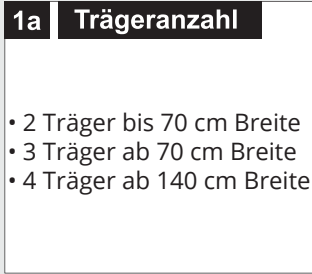
Montage **i**

Aluminium-Jalousie 16 und 25 mm

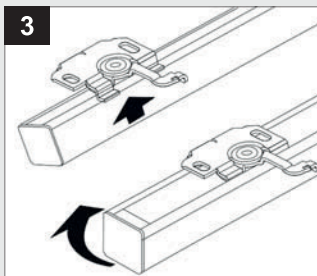
Decke - Montage nach oben



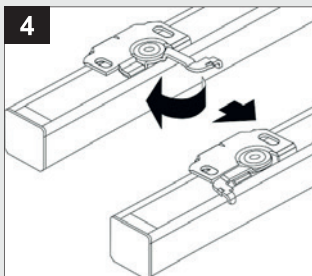
1



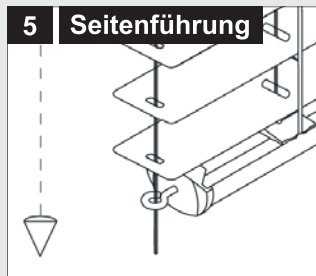
2



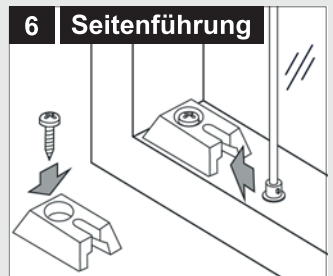
3



4

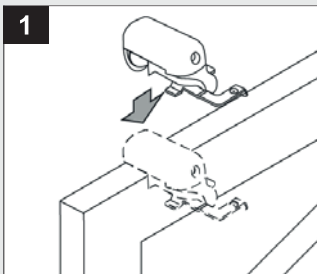


5

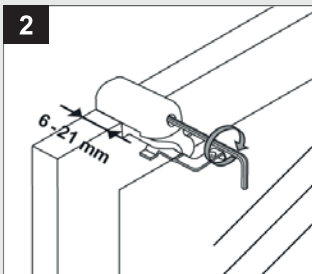


6

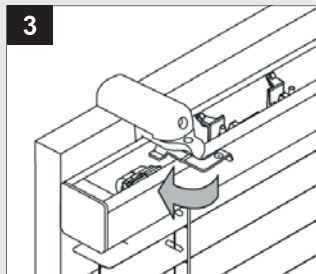
Klemmträger



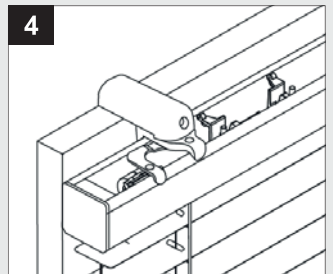
1



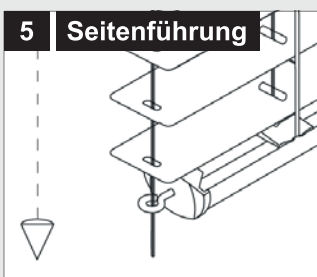
2



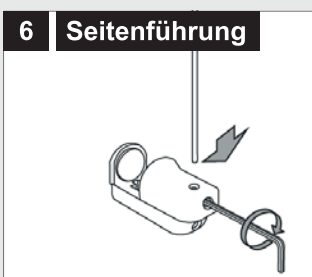
3



4

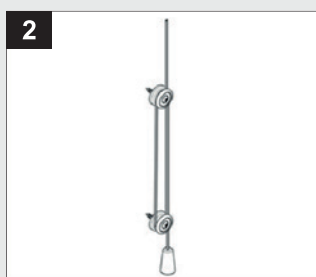
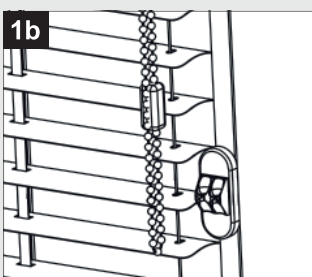
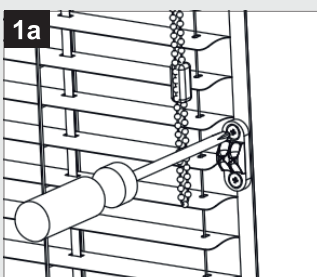


5



6

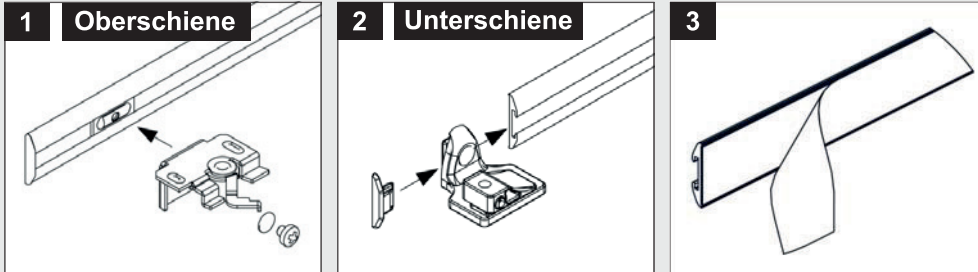
Bedienkette/Schnurhalter



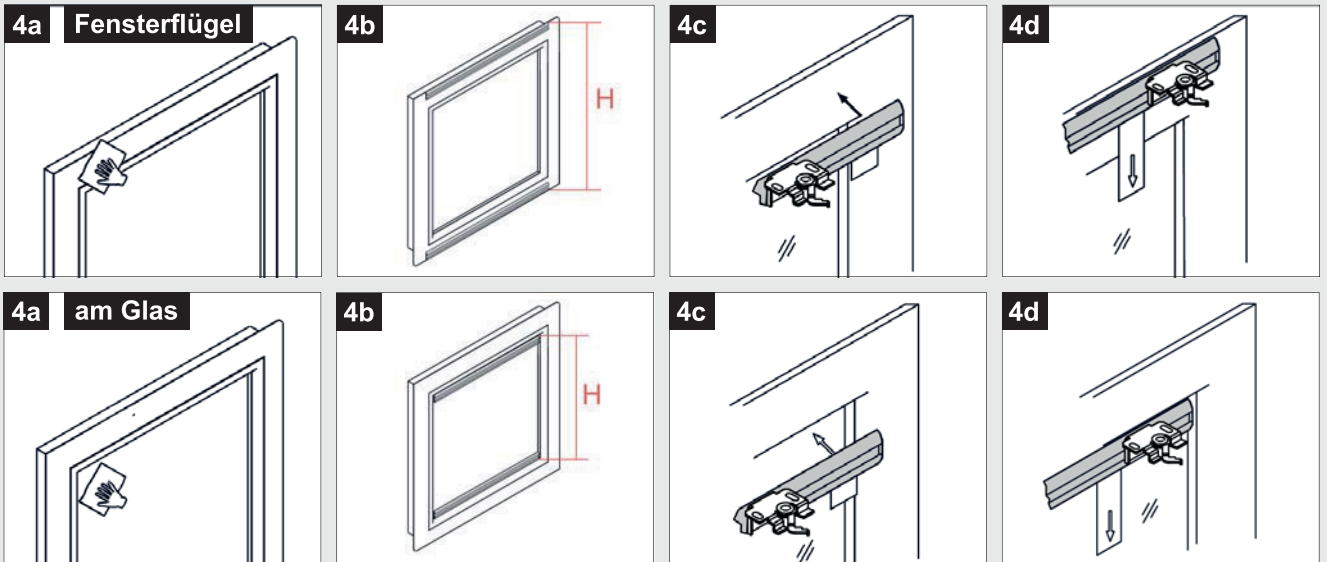
Montage **i**

Aluminium-Jalousie 16 und 25 mm - Klebemontage

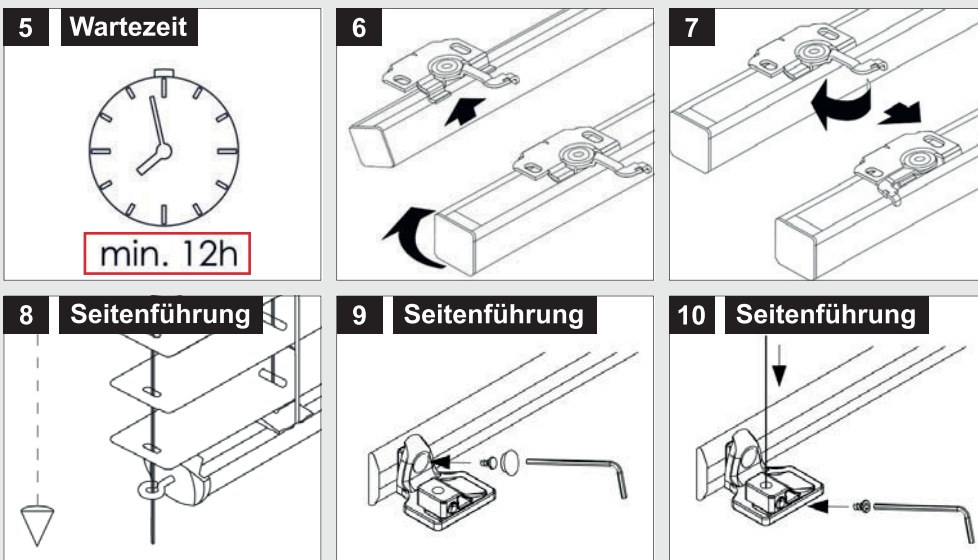
Klebeschienen vorbereiten



Montage der Klebeschienen am Flügel oder im Glasfalz



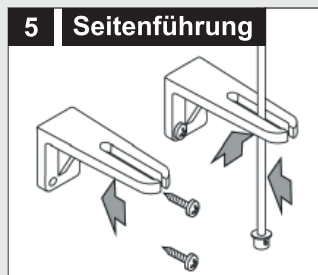
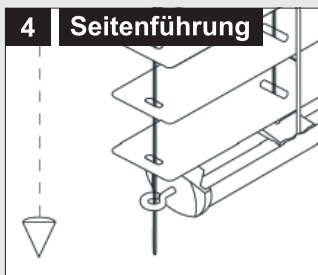
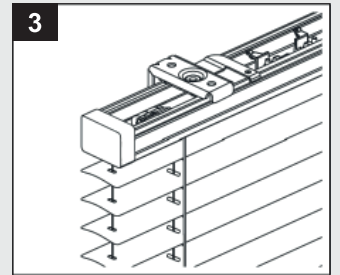
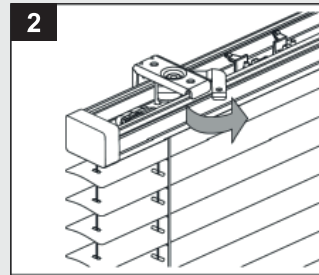
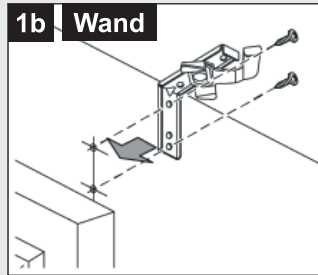
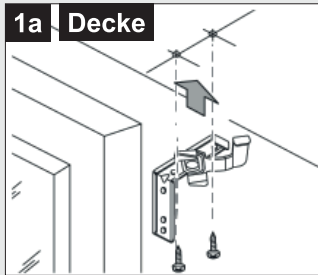
Montage der Jalousie an der Schiene



Montage **i**

Aluminium-Jalousie 50

Decke/Wand



Technische Änderungen vorbehalten.

Wir wünschen Ihnen viel Freude mit Ihrer Jalousie!